

Ford Motor Company



EDI Implementation Documentation

DESADV D.98B

- **Structure Chart**
- **Branching Diagram**
- **Segment Details**

FORD Motor Company

Systems Planning & Implementation

Christine Jaeschke

Tel.: ++44-1268-40-3758

Issue 3.4

Issue date 01.03.2018

Structure / Table of Contents

Counter	No	Tag	St	MaxOcc	Level	Content
	0000	1 UNA	C	1	0	Service string advice
	0000	2 UNB	M	1	0	Interchange header
	0010	3 UNH	M	1	0	Message header
	0020	4 BGM	M	1	0	Beginning of message
	0030	5 DTM	C	10	1	Date/time/period
	0050	6 MEA	C	5	1	Measurements
	0060	7 MOA	C	5	1	Monetary amount
	0070	SG1	C	10	1	RFF
	0080	8 RFF	M	1	1	Reference
	0100	SG2	C	99	1	NAD
	0110	9 NAD	M	1	1	Name and address
	0190	SG5	C	10	1	TOD-LOC
	0200	10 TOD	M	1	1	Terms of delivery or transport
	0210	11 LOC	C	5	2	Place/location identification
	0230	SG6	C	10	1	TDT-SG7
	0240	12 TDT	M	1	1	Details of transport
	0260	SG7	C	10	2	LOC
	0270	13 LOC	M	1	2	Place/location identification
	0290	SG8	C	1	1	EQD-SEL
	0300	14 EQD	M	1	1	Equipment details
	0320	15 SEL	C	2	2	Seal number
	0370	SG10	C	9999	1	CPS-SG11-SG16
	0380	16 CPS	M	1	1	Consignment packing sequence
	0410	SG11	C	9999	2	PAC-QTY-SG13
	0420	17 PAC	M	1	2	Package
	0440	18 QTY	C	10	3	Quantity
	0480	SG13	C	1000	3	PCI-SG14
	0490	19 PCI	M	1	3	Package identification
	0520	SG14	C	99	4	GIR
	0530	20 GIR	M	1	4	Related identification numbers
	0580	SG16	C	100	2	LIN-PIA-MEA-QTY-DTM-NAD-MOA-SG17-SG19
	0590	21 LIN	M	1	2	Line item
	0600	22 PIA	C	10	3	Additional product id
	0620	23 MEA	C	10	3	Measurements
	0630	24 QTY	C	10	3	Quantity
	0680	25 DTM	C	5	3	Date/time/period
	0690	26 NAD	C	99	3	Name and address
	0730	27 MOA	C	5	3	Monetary amount
	0740	SG17	C	99	3	RFF
	0750	28 RFF	M	1	3	Reference
	0830	SG19	C	100	3	LOC

Counter = Counter of segment/group within the EDIFACT standard

No = Consecutive segment number

MaxOcc = Maximum occurrence of the segment/group

St = Status

EDIFACT: M=Mandatory, C=Conditional

User specific: R=Required, O=Optional, D=Dependent,

A=Advised, N=Not used

Structure / Table of Contents

Counter	No	Tag	St	MaxOcc	Level	Content
0840	29	LOC	M	1	3	Place/location identification
1060	30	CNT	C	5	1	Control total
1070	31	UNT	M	1	0	Message trailer
0000	32	UNZ	M	1	0	Interchange trailer

Counter = Counter of segment/group within the EDIFACT standard

No = Consecutive segment number

MaxOcc = Maximum occurrence of the segment/group

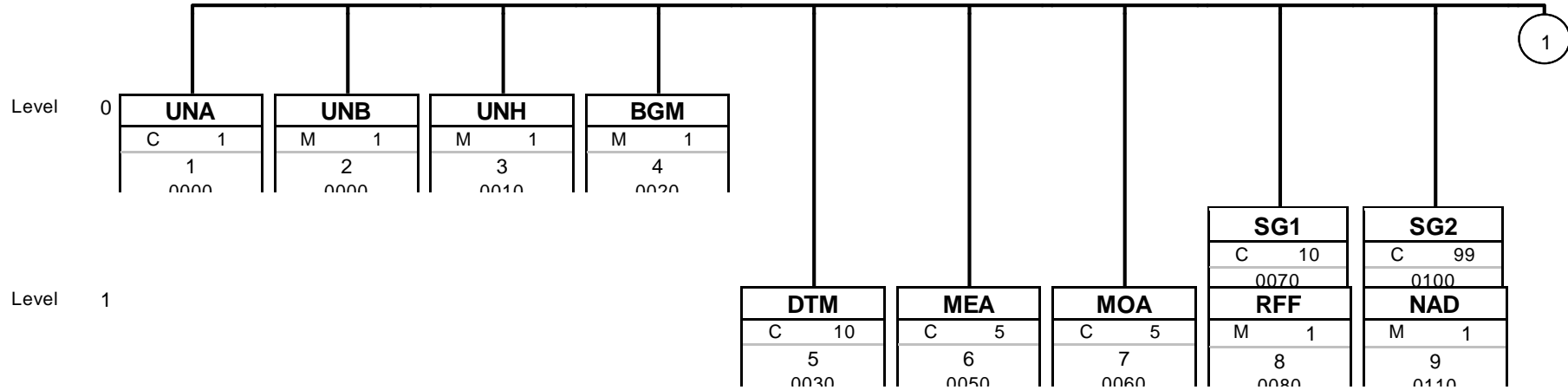
St = Status

EDIFACT: M=Mandatory, C=Conditional

User specific: R=Required, O=Optional, D=Dependent,

A=Advised, N=Not used

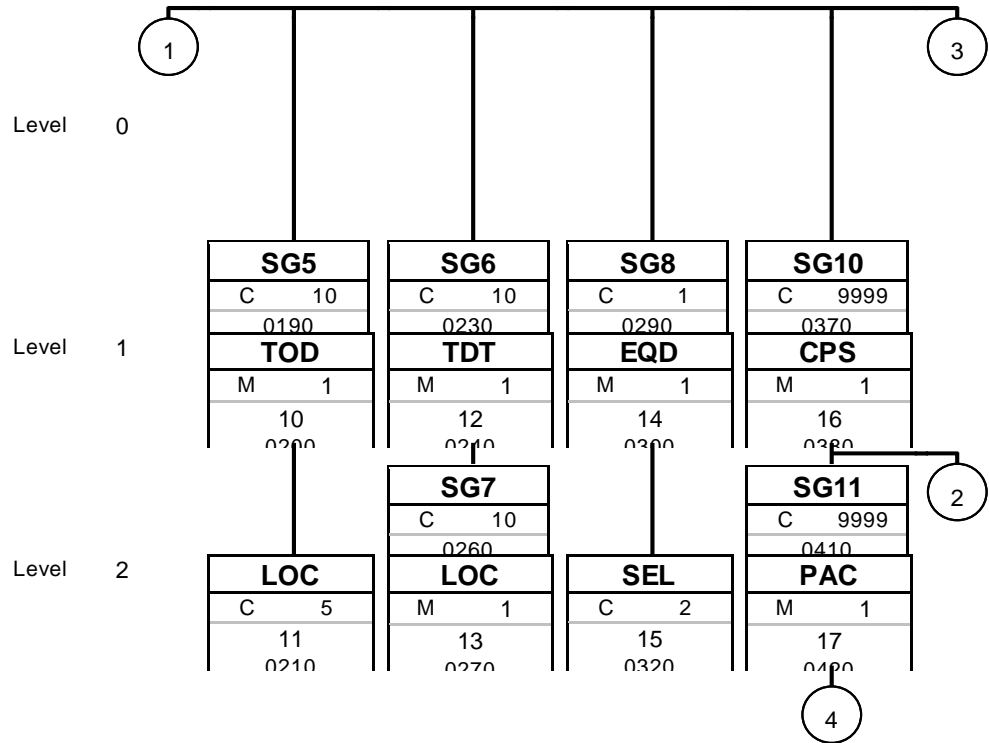
Branching Diagram of Used Segments/Groups



Tag
St MaxOcc
No
Counter

Tag = Segment/Group Tag
 St = Status (M=Mandatory, C=Conditional, R=Required, O=Optional, A=Advised, D=Dependent)
 MaxOcc = Maximum occurrence of the segment/group
 No = Consecutive segment number
 Counter = Counter of segment/group within the EDIFACT standard

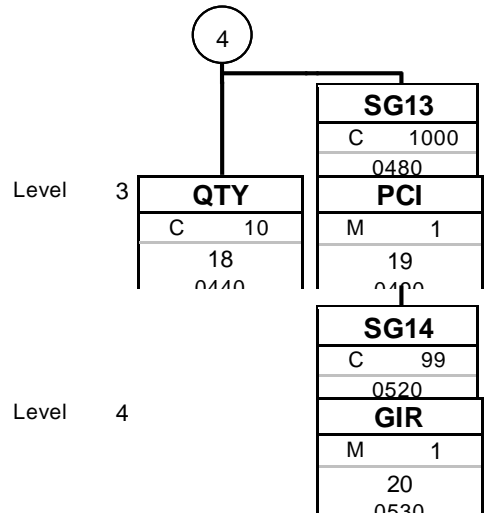
Branching Diagram of Used Segments/Groups



Tag
St MaxOcc
No
Counter

Tag = Segment/Group Tag
 St = Status (M=Mandatory, C=Conditional, R=Required, O=Optional, A=Advised, D=Dependent)
 MaxOcc = Maximum occurrence of the segment/group
 No = Consecutive segment number
 Counter = Counter of segment/group within the EDIFACT standard

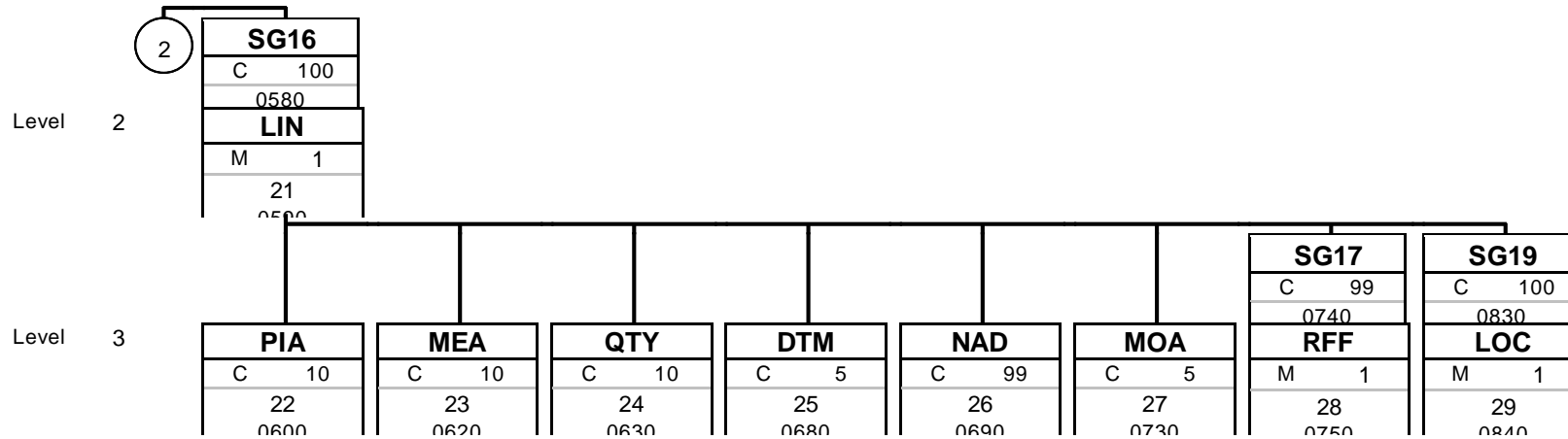
Branching Diagram of Used Segments/Groups



Tag
St MaxOcc
No
Counter

Tag = Segment/Group Tag
 St = Status (M=Mandatory, C=Conditional, R=Required, O=Optional, A=Advised, D=Dependent)
 MaxOcc = Maximum occurrence of the segment/group
 No = Consecutive segment number
 Counter = Counter of segment/group within the EDIFACT standard

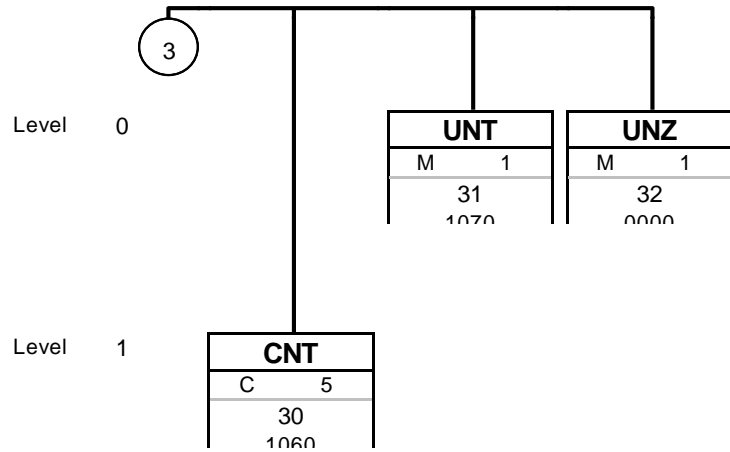
Branching Diagram of Used Segments/Groups



Tag
St MaxOcc
No
Counter

Tag = Segment/Group Tag
 St = Status (M=Mandatory, C=Conditional, R=Required, O=Optional, A=Advised, D=Dependent)
 MaxOcc = Maximum occurrence of the segment/group
 No = Consecutive segment number
 Counter = Counter of segment/group within the EDIFACT standard

Branching Diagram of Used Segments/Groups



Tag
St MaxOcc
No
Counter

Tag = Segment/Group Tag
 St = Status (M=Mandatory, C=Conditional, R=Required, O=Optional, A=Advised, D=Dependent)
 MaxOcc = Maximum occurrence of the segment/group
 No = Consecutive segment number
 Counter = Counter of segment/group within the EDIFACT standard

Segments

Counter	No	Tag	St	MaxOcc	Level	Name
0000	1	UNA	C	1	0	Service string advice

		Standard	Implementation	
Tag	Name	St Format	St Format	Usage / Remark
UNA1	Component data element separator	M an1	M an1	:
UNA2	Data element separator	M an1	M an1	+
UNA3	Decimal notation	M an1	M an1	.
UNA4	Release indicator	M an1	M an1	?
UNA5	Reserved for future use	M an1	M an1	
UNA6	Segment terminator	M an1	M an1	'

Remark:
UNA:+.? '

No = Consecutive segment number
MaxOcc = Maximum occurrence of the segment/group
Counter = Counter of segment/group within the EDIFACT standard

St = Status
EDIFACT: M=Mandatory, C=Conditional
User specific: R=Required, O=Optional, D=Dependent, A=Advised, N=Not used

Segments

Counter	No	Tag	St	MaxOcc	Level	Name
0000	2	UNB	M	1	0	Interchange header

Standard			Implementation	
Tag	Name	St Format	St Format	Usage / Remark
S001	Syntax identifier	M	M	
0001	Syntax identifier	M a4	M a4	UNOC UN/ECE level C
0002	Syntax version number	M n1	M n1	3 Version 3
S002	Interchange sender	M	M	
0004	Sender identification	M an..35	M an..35	
0007	Partner identification code qualifier	C an..4	N	Not used
0008	Address for reverse routing	C an..14	N	Not used
S003	Interchange recipient	M	M	
0010	Recipient identification	M an..35	M an..35	
0007	Partner identification code qualifier	C an..4	N	Not used
0014	Routing address	C an..14	N	Not used
S004	Date/time of preparation	M	M	
0017	Date of preparation	M n6	M n6	
0019	Time of preparation	M n4	M n4	
0020	Interchange control reference	M an..14	M an..14	
S005	Recipient's reference, password	C	N	
0022	Recipient's reference/password	M an..14	N	Not used
0025	Recipient's reference/password qualifier	C an2	N	Not used
0026	Application reference	C an..14	N	Not used
0029	Processing priority code	C a1	N	Not used
0031	Acknowledgement request	C n1	N	Not used
0032	Communications agreement ID	C an..35	N	Not used
0035	Test indicator	C n1	N	Not used

Remark:

UNB+UNOC:3+ABCDE+0134A+060307:1000+00000987654321'

No = Consecutive segment number
 MaxOcc = Maximum occurrence of the segment/group
 Counter = Counter of segment/group within the EDIFACT
 standard

St = Status
 EDIFACT: M=Mandatory, C=Conditional
 User specific: R=Required, O=Optional, D=Dependent,
 A=Advised, N=Not used

Segments

Counter	No	Tag	St	MaxOcc	Level	Name
0010	1	UNH	M	1	0	Message header

Standard			Implementation	
Tag	Name	St Format	St Format	Usage / Remark
0062	Message reference number	M an..14	M an..14	Must match the message reference number in the UNT
S009	Message identifier	M	M	
0065	Message type identifier	M an..6	M an..6	DESADV Dispatch advice message
0052	Message version number	M an..3	M an..3	D Draft version/UN/EDIFACT Directory
0054	Message release number	M an..3	M an..3	98B Release 1998 - B
0051	Controlling agency	M an..2	M an..2	UN UN/ECE/TRADE/WP.4
0057	Association assigned code	C an..6	N	Not used
0068	Common access reference	C an..35	N	Not used
S010	Status of the transfer	C	N	
0070	Sequence of transfers	M n..2	N	Not used
0073	First/last sequence message transfer indication	C a1	N	Not used

Remark:

A service segment starting and uniquely identifying a message. The message type code for the Dispatch advice message is DESADV.

Note: Dispatch advice messages conforming to this document must contain the following data in segment UNH, composite S009:

Data element 0065 DESADV 0052 D 0054 98B 0051 UN

EXAMPLE: UNH+1+DESADV:D:98B:UN'

No = Consecutive segment number
 MaxOcc = Maximum occurrence of the segment/group
 Counter = Counter of segment/group within the EDIFACT standard

St = Status
 EDIFACT: M=Mandatory, C=Conditional
 User specific: R=Required, O=Optional, D=Dependent, A=Advised, N=Not used

Segments

Counter	No	Tag	St	MaxOcc	Level	Name
0020	2	BGM	M	1	0	Beginning of message

Standard			Implementation	
Tag	Name	St Format	St Format	Usage / Remark
C002	Document/message name	C	C	
1001	Document/message name, coded	C an..3	C an..3	351 Dispatch advice
1131	Code list qualifier	C an..3	N	Not used
3055	Code list responsible agency, coded	C an..3	N	Not used
1000	Document/message name	C an..35	N	Not used
C106	Document/message identification	C	C	
1004	Document/message number	C an..35	M an..11	A unique control number, commonly called a Shipment Identification Number, assigned by the original shipper to identify a specific shipment. This number should not be repeated within a one-year period. This number must be referenced on both the packing list and the bill of lading or waybill as the Shipment Identification Number (SID) Field Length reduced to maximum allowed by Ford systems. Note: This is not the ASN number, which is required in RFF+PK segment and can only have a maximum of 8 digits.
1056	Version	C an..9	N	Not used
1060	Revision number	C an..6	N	Not used
1225	Message function, coded	C an..3	M an..2	Used to indicate an arrival DESADV. Codes '1', '22' not used by US production plants. European suppliers only use code '9'. Field Length reduced to maximum allowed by Ford systems. 1 Cancellation 5 Replace 9 Original 22 Final transmission 53 Test
4343	Response type, coded	C an..3	N	Not used

Remark:

EXAMPLE: BGM+351+12345678910+9'

No = Consecutive segment number
 MaxOcc = Maximum occurrence of the segment/group
 Counter = Counter of segment/group within the EDIFACT standard

St = Status
 EDIFACT: M=Mandatory, C=Conditional
 User specific: R=Required, O=Optional, D=Dependent, A=Advised, N=Not used

Segments

Counter	No	Tag	St	MaxOcc	Level	Name
0030	3	DTM	C	10	1	Date/time/period

Standard			Implementation	
Tag	Name	St Format	St Format	Usage / Remark
C507	Date/time/period	M	M	
2005	Date/time/period qualifier	M an..3	M an..3	Date and time shipment leaves supplier premises - required for shipment orders. Estimated date and time of arrival - required for delivery orders. Not used by Assembly plants in the US. Actual date and time of arrival. Used only by pool / consolidation points for arrival Dispatch Advice. 11 Dispatch date and or time 17 Delivery date/time, estimated 137 Document/message date/time 178 Arrival date/time, actual
2380	Date/time/period	C an..35	M an..35	
2379	Date/time/period format qualifier	C an..3	C an..3	204 CCYYMMDDHHMMSS

Remark:

EXAMPLE: DTM+137:20020606163059:204'

DTM+11:20020606160159:204'

DTM+137:20020606163059:204'

Document creation date and time '137' are mandatory. Other date and times are conditional and one of DESPATCH date and time

'11' or Arrival date/time estimated '178' must be present.

No = Consecutive segment number
 MaxOcc = Maximum occurrence of the segment/group
 Counter = Counter of segment/group within the EDIFACT standard

St = Status
 EDIFACT: M=Mandatory, C=Conditional
 User specific: R=Required, O=Optional, D=Dependent, A=Advised, N=Not used

Segments

Counter	No	Tag	St	MaxOcc	Level	Name
0050	4	MEA	C	5	1	Measurements

Standard			Implementation	
Tag	Name	St Format	St Format	Usage / Remark
6311	Measurement purpose qualifier	M an..3	M an..3	WT Weights
C502	Measurement details	C	C	
6313	Property measured, coded	C an..3	C an..3	G Gross weight N Actual net weight
6321	Measurement significance, coded	C an..3	N	Not used
6155	Measurement attribute identification	C an..17	N	Not used
6154	Measurement attribute	C an..70	N	Not used
C174	Value/range	C	C	
6411	Measure unit qualifier	M an..3	M an..2	Field Length reduced to maximum allowed by Ford systems. Use 'LB' or 'KG'
6314	Measurement value	C an..18	C an..12	Field Length reduced to maximum allowed by Ford systems.
6162	Range minimum	C n..18	N	Not used
6152	Range maximum	C n..18	N	Not used
6432	Significant digits	C n..2	N	Not used
7383	Surface/layer indicator, coded	C an..3	N	Not used

Remark:

EXAMPLE: MEA+WT+G+LB:12000'

MEA+WT+N+LB:11500'

Gross weight is expected but not mandatory for all shipments.

Net weight is expected but not mandatory for Rail shipments optional for all others.

No = Consecutive segment number
 MaxOcc = Maximum occurrence of the segment/group
 Counter = Counter of segment/group within the EDIFACT standard

St = Status
 EDIFACT: M=Mandatory, C=Conditional
 User specific: R=Required, O=Optional, D=Dependent, A=Advised, N=Not used

Segments

Counter	No	Tag	St	MaxOcc	Level	Name
0060	5	MOA	C	5	1	Monetary amount

Standard			Implementation	
Tag	Name	St Format	St Format	Usage / Remark
C516	Monetary amount	M	M	
5025	Monetary amount type qualifier	M an..3	M an..3	23 Charge amount
5004	Monetary amount	C n..35	C n..10	Field Length reduced to maximum allowed by Ford systems.
6345	Currency, coded	C an..3	C an..3	
6343	Currency qualifier	C an..3	N	Not used
4405	Status, coded	C an..3	C an..3	22 Subject to agreed condition

Remark:

EXAMPLE: MOA+23:500:USD::22'

To specify the excess handling charge.

When indicating excess handling charges the TOD & LOC in SG 5 are mandatory.

No = Consecutive segment number
 MaxOcc = Maximum occurrence of the segment/group
 Counter = Counter of segment/group within the EDIFACT standard

St = Status
 EDIFACT: M=Mandatory, C=Conditional
 User specific: R=Required, O=Optional, D=Dependent, A=Advised, N=Not used

Segments

Counter	No	Tag	St	MaxOcc	Level	Name
0070		SG1	C	10	1	RFF
0080	6	RFF	M	1	1	Reference

Standard			Implementation	
Tag	Name	St Format	St Format	Usage / Remark
C506	Reference	M	M	
1153	Reference qualifier	M an..3	M an..3	AC Air cargo transfer manifest BM Bill of lading number FN Freight bill number
1154	Reference number	C an..35	M an..16	Field Length reduced to maximum allowed by Ford systems. Maximum filed length for Freight Bills = 16 Characters. Maximum filed length for BOL = 11 Characters.
1156	Line number	C an..6	N	Not used
4000	Reference version number	C an..35	N	Not used
1060	Revision number	C an..6	N	Not used

Remark:

EXAMPLE:

RFF+BM:12345678910'

RFF+FN:123456891011121'

RFF+AC:1234568910'

No = Consecutive segment number
 MaxOcc = Maximum occurrence of the segment/group
 Counter = Counter of segment/group within the EDIFACT standard

St = Status
 EDIFACT: M=Mandatory, C=Conditional
 User specific: R=Required, O=Optional, D=Dependent, A=Advised, N=Not used

Segments

Counter	No	Tag	St	MaxOcc	Level	Name
0100		SG2	C	99	1	NAD
0110	7	NAD	M	1	1	Name and address

Standard			Implementation		
Tag	Name	St Format	St Format	Usage / Remark	
3035	Party qualifier	M an..3	M an..3	IC Intermediate consignee SF Ship from ST Ship to SU Supplier	
C082	Party identification details	C	C		
3039	Party identification	M an..35	M an..5	Ford Motor Co. 5 character GSDB code for location. Example ST = Ford plant SU = Supplier. Field Length reduced to maximum allowed by Ford systems.	
1131	Code list qualifier	C an..3	N	Not used	
3055	Code list responsible agency, coded	C an..3	C an..3	92 Assigned by buyer or buyer's agent	
C058	Name and address	C	N		
3124	Name and address line	M an..35	N	Not used	
3124	Name and address line	C an..35	N	Not used	
3124	Name and address line	C an..35	N	Not used	
3124	Name and address line	C an..35	N	Not used	
3124	Name and address line	C an..35	N	Not used	
C080	Party name	C	N		
3036	Party name	M an..35	N	Not used	
3036	Party name	C an..35	N	Not used	
3036	Party name	C an..35	N	Not used	
3036	Party name	C an..35	N	Not used	
3036	Party name	C an..35	N	Not used	
3045	Party name format, coded	C an..3	N	Not used	
C059	Street	C	N		
3042	Street and number/p.o. box	M an..35	N	Not used	
3042	Street and number/p.o. box	C an..35	N	Not used	
3042	Street and number/p.o. box	C an..35	N	Not used	
3042	Street and number/p.o. box	C an..35	N	Not used	
3164	City name	C an..35	N	Not used	

No = Consecutive segment number
 MaxOcc = Maximum occurrence of the segment/group
 Counter = Counter of segment/group within the EDIFACT standard

St = Status
 EDIFACT: M=Mandatory, C=Conditional
 User specific: R=Required, O=Optional, D=Dependent, A=Advised, N=Not used

Segments

3229	Country sub-entity identification	C an..9	N	Not used
3251	Postcode identification	C an..9	N	Not used
3207	Country, coded	C an..3	N	Not used

Remark:

EXAMPLE: NAD+SU+GSDBS::92' The supplier, ship from, and ship to codes are mandatory elements
 NAD+ST+GSDBF::92' Codes = Ford GSDB codes assigned to specific locations.

No = Consecutive segment number
 MaxOcc = Maximum occurrence of the segment/group
 Counter = Counter of segment/group within the EDIFACT
 standard

St = Status
 EDIFACT: M=Mandatory, C=Conditional
 User specific: R=Required, O=Optional, D=Dependent,
 A=Advised, N=Not used

Segments

Counter	No	Tag	St	MaxOcc	Level	Name
0190		SG5	C	10	1	TOD-LOC
0200	8	TOD	M	1	1	Terms of delivery or transport

Standard			Implementation	
Tag	Name	St Format	St Format	Usage / Remark
4055	Terms of delivery or transport function, coded	C an..3	N	Not used
4215	Transport charges method of payment, coded	C an..3	M an..3	CC Collect PP Prepaid (by seller)
C100	Terms of delivery or transport	C	C	
4053	Terms of delivery or transport, coded	C an..3	N	Not used
1131	Code list qualifier	C an..3	N	Not used
3055	Code list responsible agency, coded	C an..3	C an..3	116 US, ANSI ASC X12
4052	Terms of delivery or transport	C an..70	M an..3	Field Length reduced to maximum allowed by Ford systems.
4052	Terms of delivery or transport	C an..70	N	Not used

Remark:

EXAMPLE: TOD++CC+::116:FOB'
TOD++PP+::116:FOB'

When the MOA at the header level is used the SG 5 TOD and LOC must also be used. The TOD can occur without the use of the MOA at the header level. The LOC must occur whenever the TOD is used.

No = Consecutive segment number
MaxOcc = Maximum occurrence of the segment/group
Counter = Counter of segment/group within the EDIFACT standard

St = Status
EDIFACT: M=Mandatory, C=Conditional
User specific: R=Required, O=Optional, D=Dependent, A=Advised, N=Not used

Segments

Counter	No	Tag	St	MaxOcc	Level	Name
0190		SG5	C	10	1	TOD-LOC
0210	9	LOC	C	5	2	Place/location identification

Standard			Implementation		
Tag	Name	St Format	St Format	Usage / Remark	
3227	Place/location qualifier	M an..3	M an..3	5 Place of departure 7 Place of delivery	
C517	Location identification	C	C		
3225	Place/location identification	C an..25	C an..5	Field size reduced to maximum allowed in Ford Motor Company systems.	
1131	Code list qualifier	C an..3	N	Not used	
3055	Code list responsible agency, coded	C an..3	N	Not used	
3224	Place/location	C an..70	N	Not used	
C519	Related location one identification	C	N		
3223	Related place/location one identification	C an..25	N	Not used	
1131	Code list qualifier	C an..3	N	Not used	
3055	Code list responsible agency, coded	C an..3	N	Not used	
3222	Related place/location one	C an..70	N	Not used	
C553	Related location two identification	C	N		
3233	Related place/location two identification	C an..25	N	Not used	
1131	Code list qualifier	C an..3	N	Not used	
3055	Code list responsible agency, coded	C an..3	N	Not used	
3232	Related place/location two	C an..70	N	Not used	
5479	Relation, coded	C an..3	N	Not used	

Remark:

EXAMPLE: LOC+5+suppl'
LOC+7+plant'

LOC segment is used to identify the transport terms from the TOD for Ford's systems. Use a '5' and the supplier GSDB for 'origin' and a '7' and plant GSDB for 'destination'.

This segment is mandatory when the TOD is used.

No = Consecutive segment number
MaxOcc = Maximum occurrence of the segment/group
Counter = Counter of segment/group within the EDIFACT standard

St = Status
EDIFACT: M=Mandatory, C=Conditional
User specific: R=Required, O=Optional, D=Dependent, A=Advised, N=Not used

Segments

Counter	No	Tag	St	MaxOcc	Level	Name
0230		SG6	C	10	1	TDT-SG7
0240	10	TDT	M	1	1	Details of transport

Standard			Implementation		
Tag	Name	St Format	St Format	Usage / Remark	
8051	Transport stage qualifier	M an..3	M an..3	12 At departure 25 Delivery carrier all transport	
8028	Conveyance reference number	C an..17	N	Not used	
C220	Mode of transport	C	C		
8067	Mode of transport, coded	C an..3	M an..2	Ford Motor Co. allows the following codes to be used on inbound DESADV. Field Length reduced to maximum allowed by Ford systems. M = Motor A = Air W = Inland waterway H = Customer Pickup R = Rail S = Ocean O = Containerized Ocean C = Consolidation PC = Private Carrier (supplier truck) G = Piggyback* LT = Less than truckload AE = Air express PP = Pool Point* PR = Pooled Rail* PG = Pooled Piggyback* PA = Pooled air* PT = Pooled Truck JT = Just-In-Time* RR = Roadrailer* U = UPS ZZ = On hand at pool E = Expedited Truck * Note: From 6/15/92 ANSI 856 spec, A data maintenance request to add the Codes identified with an "*" is pending with ANSI X12.	
8066	Mode of transport	C an..17	N	Not used	
C228	Transport means	C	C		
8179	Type of means of transport identification	C an..8	C an..8	13 Ocean vessel	

No = Consecutive segment number
 MaxOcc = Maximum occurrence of the segment/group
 Counter = Counter of segment/group within the EDIFACT standard

St = Status
 EDIFACT: M=Mandatory, C=Conditional
 User specific: R=Required, O=Optional, D=Dependent, A=Advised, N=Not used

Segments

8178	Type of means of transport	C an..17	C an..12	When DE 8067 = 'O' Containerized Ocean enter the name of the ocean vessel, else not used. Field Length reduced to maximum allowed by Ford systems.
C040	Carrier	C	C	
3127	Carrier identification	C an..17	M an..5	Enter 5-digit Ford carrier code into this field.
	Code list qualifier	C an..3	N	Not used

No = Consecutive segment number
 MaxOcc = Maximum occurrence of the segment/group
 Counter = Counter of segment/group within the EDIFACT standard

St = Status
 EDIFACT: M=Mandatory, C=Conditional
 User specific: R=Required, O=Optional, D=Dependent, A=Advised, N=Not used

Segments

		Standard	Implementation	
Tag	Name	St Format	St Format	Usage / Remark
1131				
3055	Code list responsible agency, coded	C an..3	N	Not used
3128	Carrier name	C an..35	N	Not used
8101	Transit direction, coded	C an..3	N	Not used
C401	Excess transportation information	C	C	Used to further define charges in MOA segment.
8457	Excess transportation reason, coded	M an..3	M an..3	X Authorization code to be determined
8459	Excess transportation responsibility, coded	M an..3	M an..3	A Customer plant (receiving location)
7130	Customer authorization number	C an..17	N	Not used
C222	Transport identification	C	C	If Component element 8067 indicates rail, piggyback, 'R' 'G' 'PR' 'RR' or ocean shipment 'O' 'S' use equipment owner's code (Standard Carrier Abbreviation Code). Otherwise not used. When shipping via Ocean container the first 4 characters of the container number are entered here. Characters 5-11 are entered in the EQD segment in group 8 data element 8260.
8213	Id. of means of transport identification	C an..9	C an..4	Field size reduced to max allowed by Ford applications.
1131	Code list qualifier	C an..3	N	Not used
3055	Code list responsible agency, coded	C an..3	N	Not used
8212	Id. of the means of transport	C an..35	N	Not used
8453	Nationality of means of transport, coded	C an..3	N	Not used
8281	Transport ownership, coded	C an..3	N	Not used

Remark:

EXAMPLE: TDT+12++M++GSDBA'
TDT+12++RR++GSDBA+++RAIL'
TDT+12++AE++GSDBA++X:A'
TDT+12++O+13:VESSELNAME+GSDBA+++CONT'

No = Consecutive segment number
MaxOcc = Maximum occurrence of the segment/group
Counter = Counter of segment/group within the EDIFACT standard

St = Status
EDIFACT: M=Mandatory, C=Conditional
User specific: R=Required, O=Optional, D=Dependent, A=Advised, N=Not used

Segments

Counter	No	Tag	St	MaxOcc	Level	Name
0260		SG7	C	10	2	LOC
0270	11	LOC	M	1	2	Place/location identification

Standard			Implementation	
Tag	Name	St Format	St Format	Usage / Remark
3227	Place/location qualifier	M an..3	M an..3	Used to describe airport locations when TDT is 'AE' Used to describe pool point locations. 13 Place of transshipment 107 Place of consolidation
C517	Location identification	C	C	
3225	Place/location identification	C an..25	C an..5	If shipment from supplier to pool point use Ford assigned code for Pool Point Location. If air shipment use airport code ex (DTW) Field Length reduced to maximum allowed by Ford systems, represents GSDB code of pool point.
1131	Code list qualifier	C an..3	N	Not used
3055	Code list responsible agency, coded	C an..3	N	Not used
3224	Place/location	C an..70	N	Not used
C519	Related location one identification	C	N	
3223	Related place/location one identification	C an..25	N	Not used
1131	Code list qualifier	C an..3	N	Not used
3055	Code list responsible agency, coded	C an..3	N	Not used
3222	Related place/location one	C an..70	N	Not used
C553	Related location two identification	C	N	
3233	Related place/location two identification	C an..25	N	Not used
1131	Code list qualifier	C an..3	N	Not used
3055	Code list responsible agency, coded	C an..3	N	Not used
3232	Related place/location two	C an..70	N	Not used
5479	Relation, coded	C an..3	N	Not used

Remark:
EXAMPLE: LOC+107+GSDB
LOC+13+DTW

Mandatory when TDT C220 / 8067 = 'PP' (pool shipment) or if an Air shipment is identified by 'A', or 'AE' or 'PA'

No = Consecutive segment number
MaxOcc = Maximum occurrence of the segment/group
Counter = Counter of segment/group within the EDIFACT standard
St = Status
EDIFACT: M=Mandatory, C=Conditional
User specific: R=Required, O=Optional, D=Dependent, A=Advised, N=Not used

Segments

Counter	No	Tag	St	MaxOcc	Level	Name
---------	----	-----	----	--------	-------	------

0290		SG8	C	1	1	EQD-SEL
------	--	------------	---	---	---	----------------

Maximum occurrence reduced to maximum allowed by Ford systems.

0300	12	EQD	M	1	1	Equipment details
------	----	------------	---	---	---	--------------------------

Standard			Implementation	
Tag	Name	St Format	St Format	Usage / Remark
8053	Equipment qualifier	M an..3	M an..3	AA Ground equipment AK Aircraft BX Boxcar CN Container RR Rail car TE Trailer
C237	Equipment identification	C	C	
8260	Equipment identification number	C an..17	M an..7	8053 = CN /The ISO Container Number (Conveyance Number) 8053 = TE/RR The equipment number, such as railcar or Trailer including initials. When shipping via Ocean container characters 5-11 of the container number are entered here. Characters 1-4 are entered in the TDT segment in group 6 data element C222 COMPONENT ELEMENT 8213. Field Length reduced to maximum allowed by Ford systems.
1131	Code list qualifier	C an..3	N	Not used
3055	Code list responsible agency, coded	C an..3	N	Not used
3207	Country, coded	C an..3	N	Not used
C224	Equipment size and type	C	N	
8155	Equipment size and type identification	C an..10	N	Not used
1131	Code list qualifier	C an..3	N	Not used
3055	Code list responsible agency, coded	C an..3	N	Not used
8154	Equipment size and type	C an..35	N	Not used
8077	Equipment supplier, coded	C an..3	N	Not used
8249	Equipment status, coded	C an..3	N	Not used
8169	Full/empty indicator, coded	C an..3	N	Not used

Remark:

EXAMPLE:EQD+CN+A2394'
EQD+TE+1234567'

No = Consecutive segment number
MaxOcc = Maximum occurrence of the segment/group
Counter = Counter of segment/group within the EDIFACT standard

St = Status
EDIFACT: M=Mandatory, C=Conditional
User specific: R=Required, O=Optional, D=Dependent, A=Advised, N=Not used

Segments

Counter	No	Tag	St	MaxOcc	Level	Name
---------	----	-----	----	--------	-------	------

0290		SG8	C	1	1	EQD-SEL
------	--	------------	---	---	---	----------------

Maximum occurrence reduced to maximum allowed by Ford systems.

0320	13	SEL	C	2	2	Seal number
------	----	------------	---	---	---	--------------------

		Standard	Implementation		
Tag	Name	St Format	St Format	Usage / Remark	
9308	Seal number	C an..10	C an..10	Maximum length in Ford applications = 10 characters	
C215	Seal issuer	C	N		
9303	Sealing party, coded	C an..3	N	Not used	
1131	Code list qualifier	C an..3	N	Not used	
3055	Code list responsible agency, coded	C an..3	N	Not used	
9302	Sealing party	C an..35	N	Not used	
4517	Seal condition, coded	C an..3	N	Not used	
C208	Identity number range	C	N		
7402	Identity number	M an..35	N	Not used	
7402	Identity number	C an..35	N	Not used	

Remark:
EXAMPLE: SEL+123456789A'

No = Consecutive segment number
 MaxOcc = Maximum occurrence of the segment/group
 Counter = Counter of segment/group within the EDIFACT standard

St = Status
 EDIFACT: M=Mandatory, C=Conditional
 User specific: R=Required, O=Optional, D=Dependent, A=Advised, N=Not used

Segments

Counter	No	Tag	St	MaxOcc	Level	Name
0370		SG10	C	9999	1	CPS-SG11-SG16
0380	14	CPS	M	1	1	Consignment packing sequence

Standard			Implementation	
Tag	Name	St Format	St Format	Usage / Remark
7164	Hierarchical id. number	M an..12	M an..12	Begins with the number 1 and increments by one for each occurrence within the message. Numbers are not to be repeated within the same message.
7166	Hierarchical parent id.	C an..12	N	Not used
7075	Packaging level, coded	C an..3	C an..3	1 Inner 3 Outer 4 No packaging hierarchy

Remark:

EXAMPLE: CPS+1++3'
 CPS+2++1'
 CPS+3++4'

No = Consecutive segment number
 MaxOcc = Maximum occurrence of the segment/group
 Counter = Counter of segment/group within the EDIFACT standard

St = Status
 EDIFACT: M=Mandatory, C=Conditional
 User specific: R=Required, O=Optional, D=Dependent, A=Advised, N=Not used

Segments

Counter	No	Tag	St	MaxOcc	Level	Name
0410		SG11	C	9999	2	PAC-QTY-SG13
Group is mandatory for all shipments.						
0420	15	PAC	M	1	2	Package

Standard			Implementation	
Tag	Name	St Format	St Format	Usage / Remark
7224	Number of packages	C n..8	C n..6	Used to indicate the number of packages per LIN of this specific package type. Maximum characters for this field is 6. Field Length reduced to maximum allowed by Ford systems.
C531	Packaging details	C	N	
7075	Packaging level, coded	C an..3	N	Not used
7233	Packaging related information, coded	C an..3	N	Not used
7073	Packaging terms and conditions, coded	C an..3	N	Not used
C202	Package type	C	C	
7065	Type of packages identification	C an..17	C an..8	Use Ford packaging code. Field Length reduced to maximum allowed by Ford systems.
1131	Code list qualifier	C an..3	N	Not used
3055	Code list responsible agency, coded	C an..3	C an..3	92 Assigned by buyer or buyer's agent
7064	Type of packages	C an..35	N	Not used
C402	Package type identification	C	N	
7077	Item description type, coded	M an..3	N	Not used
7064	Type of packages	M an..35	N	Not used
7143	Item number type, coded	C an..3	N	Not used
7064	Type of packages	C an..35	N	Not used
7143	Item number type, coded	C an..3	N	Not used
C532	Returnable package details	C	N	
8395	Returnable package freight payment responsibility, coded	C an..3	N	Not used
8393	Returnable package load contents, coded	C an..3	N	Not used

Remark:

EXAMPLE: PAC+20++PLT90::92'

No = Consecutive segment number
 MaxOcc = Maximum occurrence of the segment/group
 Counter = Counter of segment/group within the EDIFACT standard

St = Status
 EDIFACT: M=Mandatory, C=Conditional
 User specific: R=Required, O=Optional, D=Dependent, A=Advised, N=Not used

Segments

Counter	No	Tag	St	MaxOcc	Level	Name
	0410	SG11	C	9999	2	PAC-QTY-SG13
						Group is mandatory for all shipments.
	0440	16 QTY	C	10	3	Quantity

Standard			Implementation		
Tag	Name	St Format	St Format	Usage / Remark	
C186	Quantity details	M	M		
6063	Quantity qualifier	M an..3	M an..3	Used to report the total number of a type of package in a shipment. This quantity is normally reported once per package type per DESADV. The total landing quantity of up to 20 package types can be reported per DESADV. If there are different part numbers within one ASN of which a different amount goes into the same package type (QTY+52), a new CPS and PAC have to be created for them. EXAMPLE: QTY+117:25' 4 parts are packed in a containers described as CTN90. There are 100 parts of the same type on the ASN which means they are packed in 25 containers of type CTN90 on the ASN. Qualifier '117' is used to report the total number of CTN90 received in the shipment (25) and is used once for CTN90. 52 Quantity per pack 117 Quantity landed	
6060	Quantity	M n..15	M n..9	Field Length reduced to maximum allowed by Ford systems. When describing the landing quantity maximum field size is 8 characters. When describing the quantity per pack the maximum field size is 9 characters.	
6411	Measure unit qualifier	C an..3	N	Field Length reduced to maximum allowed by Ford systems. Not used	

Remark:

EXAMPLE: QTY+52:16'
 QTY+117:200'

Quantity per pack and Total Landed Quantity of a package type are both mandatory.

No = Consecutive segment number
 MaxOcc = Maximum occurrence of the segment/group
 Counter = Counter of segment/group within the EDIFACT standard

St = Status
 EDIFACT: M=Mandatory, C=Conditional
 User specific: R=Required, O=Optional, D=Dependent, A=Advised, N=Not used

Segments

Counter	No	Tag	St	MaxOcc	Level	Name
0480		SG13	C	1000	3	PCI-SG14
0490	17	PCI	M	1	3	Package identification

Standard			Implementation	
Tag	Name	St Format	St Format	Usage / Remark
4233	Marking instructions, coded	C an..3	C an..3	15 Mark supplier number
C210	Marks & labels	C	N	
7102	Shipping marks	M an..35	N	Not used
7102	Shipping marks	C an..35	N	Not used
7102	Shipping marks	C an..35	N	Not used
7102	Shipping marks	C an..35	N	Not used
7102	Shipping marks	C an..35	N	Not used
7102	Shipping marks	C an..35	N	Not used
7102	Shipping marks	C an..35	N	Not used
7102	Shipping marks	C an..35	N	Not used
7102	Shipping marks	C an..35	N	Not used
7102	Shipping marks	C an..35	N	Not used
8275	Container or package state, coded	C an..3	N	Not used
C827	Type of marking	C	N	
7511	Type of marking, coded	M an..3	N	Not used
1131	Code list qualifier	C an..3	N	Not used
3055	Code list responsible agency, coded	C an..3	N	Not used

Remark:
EXAMPLE: PCI+15'

No = Consecutive segment number
 MaxOcc = Maximum occurrence of the segment/group
 Counter = Counter of segment/group within the EDIFACT standard

St = Status
 EDIFACT: M=Mandatory, C=Conditional
 User specific: R=Required, O=Optional, D=Dependent, A=Advised, N=Not used

Segments

Counter	No	Tag	St	MaxOcc	Level	Name
0520		SG14	C	99	4	GIR
0530	18	GIR	M	1	4	Related identification numbers

Standard			Implementation		
Tag	Name	St Format	St Format	Usage / Remark	
7297	Set identification qualifier	M an..3	M an..3	3 Package	
C206	Identification number	M	M		
7402	Identity number	M an..35	M an..9	Field Length reduced to maximum allowed by Ford systems. Minimum length 2, 1 char for label ID and 1 for serial number.	
7405	Identity number qualifier	C an..3	C an..3	ML Marking/label number	
4405	Status, coded	C an..3	N	Not used	
C206	Identification number	C	C		
7402	Identity number	M an..35	M an..9	Field Length reduced to maximum allowed by Ford systems. Minimum length 2, 1 char for label ID and 1 for serial number.	
7405	Identity number qualifier	C an..3	C an..3	ML Marking/label number	
4405	Status, coded	C an..3	N	Not used	
C206	Identification number	C	C		
7402	Identity number	M an..35	M an..9	Field Length reduced to maximum allowed by Ford systems. Minimum length 2, 1 char for label ID and 1 for serial number.	
7405	Identity number qualifier	C an..3	C an..3	ML Marking/label number	
4405	Status, coded	C an..3	N	Not used	
C206	Identification number	C	C		
7402	Identity number	M an..35	M an..9	Field Length reduced to maximum allowed by Ford systems. Minimum length 2, 1 char for label ID and 1 for serial number.	
7405	Identity number qualifier	C an..3	C an..3	ML Marking/label number	
4405	Status, coded	C an..3	N	Not used	
C206	Identification number	C	C		
7402	Identity number	M an..35	M an..9	Field Length reduced to maximum allowed by Ford systems. Minimum length 2, 1 char for label ID and 1 for serial number.	
7405	Identity number qualifier	C an..3	C an..3	ML Marking/label number	
4405	Status, coded	C an..3	N	Not used	

Remark:

EXAMPLE: GIR+3+4S1234567:ML+ S7111213:ML'
 GIR+3+S21234567:ML+ S21234568:ML+ S21234569:ML'

No = Consecutive segment number
 MaxOcc = Maximum occurrence of the segment/group
 Counter = Counter of segment/group within the EDIFACT standard

St = Status
 EDIFACT: M=Mandatory, C=Conditional
 User specific: R=Required, O=Optional, D=Dependent,
 A=Advised, N=Not used

Segments

Counter	No	Tag	St	MaxOcc	Level	Name
0580		SG16	C	100	2	LIN-PIA-MEA-QTY-DTM-NAD-MOA-SG17-SG19
0590	19	LIN	M	1	2	Line item

Standard			Implementation		
Tag	Name	St Format	St Format	Usage / Remark	
1082	Line item number	C an..6	C an..6		
1229	Action request/notification, coded	C an..3	N	Not used	
C212	Item number identification	C	C		
7140	Item number	C an..35	M an..30	Ford part number in form of prefix, base, suffix and control code - delimited by a space; or Ford returnable container part number. Field length reduced to max allowed by Ford applications.	
7143	Item number type, coded	C an..3	M an..3	IN Buyer's item number RC Returnable container number	
1131	Code list qualifier	C an..3	N	Not used	
3055	Code list responsible agency, coded	C an..3	M an..3	92 Assigned by buyer or buyer's agent	
C829	Sub-line information	C	N		
5495	Sub-line indicator, coded	C an..3	N	Not used	
1082	Line item number	C an..6	N	Not used	
1222	Configuration level	C n..2	N	Not used	
7083	Configuration, coded	C an..3	N	Not used	

Remark:

EXAMPLE

LIN+1++prefix base suffix cntlcode:IN::92'

LIN+2++ Z345355:RC::92'

DO NOT TRANSMIT MORE THAN 100 PART NUMBERS (LIN SEGMENTS) IN ONE TRANSMISSION FILE. In the unlikely case of more than 100 part numbers on a shipment please create a separate transmission file (UNA-UNZ) for every 100 part numbers.

No = Consecutive segment number
 MaxOcc = Maximum occurrence of the segment/group
 Counter = Counter of segment/group within the EDIFACT standard

St = Status
 EDIFACT: M=Mandatory, C=Conditional
 User specific: R=Required, O=Optional, D=Dependent, A=Advised, N=Not used

Segments

Counter	No	Tag	St	MaxOcc	Level	Name
0580		SG16	C	9999	2	LIN-PIA-MEA-QTY-DTM-NAD-MOA-SG17-SG19
0600	20	PIA	C	10	3	Additional product id

Standard			Implementation		
Tag	Name	St Format	St Format	Usage / Remark	
4347	Product id. function qualifier	M an..3	M an..3	1 Additional identification	
C212	Item number identification	M	M		
7140	Item number	C an..35	C an..10	Field Length reduced to maximum allowed by Ford systems.	
7143	Item number type, coded	C an..3	C an..3	PO Purchase order number	
1131	Code list qualifier	C an..3	N	Not used	
3055	Code list responsible agency, coded	C an..3	N	Not used	
C212	Item number identification	C	N		
7140	Item number	C an..35	N	Not used	
7143	Item number type, coded	C an..3	N	Not used	
1131	Code list qualifier	C an..3	N	Not used	
3055	Code list responsible agency, coded	C an..3	N	Not used	
C212	Item number identification	C	N		
7140	Item number	C an..35	N	Not used	
7143	Item number type, coded	C an..3	N	Not used	
1131	Code list qualifier	C an..3	N	Not used	
3055	Code list responsible agency, coded	C an..3	N	Not used	
C212	Item number identification	C	N		
7140	Item number	C an..35	N	Not used	
7143	Item number type, coded	C an..3	N	Not used	
1131	Code list qualifier	C an..3	N	Not used	
3055	Code list responsible agency, coded	C an..3	N	Not used	
C212	Item number identification	C	N		
7140	Item number	C an..35	N	Not used	
7143	Item number type, coded	C an..3	N	Not used	
1131	Code list qualifier	C an..3	N	Not used	
3055	Code list responsible agency, coded	C an..3	N	Not used	

No = Consecutive segment number
 MaxOcc = Maximum occurrence of the segment/group
 Counter = Counter of segment/group within the EDIFACT standard

St = Status
 EDIFACT: M=Mandatory, C=Conditional
 User specific: R=Required, O=Optional, D=Dependent, A=Advised, N=Not used

Segments

Remark:

EXAMPLE PIA+1+5001011099:PO'

No = Consecutive segment number
MaxOcc = Maximum occurrence of the segment/group
Counter = Counter of segment/group within the EDIFACT
standard

St = Status
EDIFACT: M=Mandatory, C=Conditional
User specific: R=Required, O=Optional, D=Dependent,
A=Advised, N=Not used

Segments

Counter	No	Tag	St	MaxOcc	Level	Name
0580		SG16	C	9999	2	LIN-PIA-MEA-QTY-DTM-NAD-MOA-SG17-SG19
0620	21	MEA	C	10	3	Measurements

Standard			Implementation	
Tag	Name	St Format	St Format	Usage / Remark
6311	Measurement purpose qualifier	M an..3	M an..3	PD Physical dimensions (product ordered)
C502	Measurement details	C	C	
6313	Property measured, coded	C an..3	C an..3	G Gross weight N Actual net weight
6321	Measurement significance, coded	C an..3	N	Not used
6155	Measurement attribute identification	C an..17	N	Not used
6154	Measurement attribute	C an..70	N	Not used
C174	Value/range	C	C	
6411	Measure unit qualifier	M an..3	M an..2	Field Length reduced to maximum allowed by Ford systems. Use only KG or LB.
6314	Measurement value	C an..18	C an..18	
6162	Range minimum	C n..18	N	Not used
6152	Range maximum	C n..18	N	Not used
6432	Significant digits	C n..2	N	Not used
7383	Surface/layer indicator, coded	C an..3	N	Not used

Remark:

EXAMPLE: MEA+PD+G+KG:20000'
MEA+PD+N+KG:19450'

No = Consecutive segment number
MaxOcc = Maximum occurrence of the segment/group
Counter = Counter of segment/group within the EDIFACT standard

St = Status
EDIFACT: M=Mandatory, C=Conditional
User specific: R=Required, O=Optional, D=Dependent, A=Advised, N=Not used

Segments

Counter	No	Tag	St	MaxOcc	Level	Name
0580		SG16	C	9999	2	LIN-PIA-MEA-QTY-DTM-NAD-MOA-SG17-SG19
0630	22	QTY	C	10	3	Quantity

Standard			Implementation	
Tag	Name	St Format	St Format	Usage / Remark
C186	Quantity details	M	M	
6063	Quantity qualifier	M an..3	M an..3	For Assembly plants the cumulative quantity shipped for this model year through the previous day. Not used for returnable containers. Not used for primary metal item level. 3 Cumulative quantity 12 Dispatch quantity 18 Previous quantity
6060	Quantity	M n..15	M n..15	Only whole numbers are required, no decimal places
6411	Measure unit qualifier	C an..3	M an..2	Mandatory per Ford. This must be the same Unit of Measure provided on the corresponding shipment authorization document (DELFOR or DELJIT).

Remark:

EXAMPLE: QTY+12:320:EA'
QTY+3:1200:EA'

The dispatch quantity (shipped) is mandatory as is one occurrence of a CUM quantity either '3' or '18' must also be present.

No = Consecutive segment number
MaxOcc = Maximum occurrence of the segment/group
Counter = Counter of segment/group within the EDIFACT standard

St = Status
EDIFACT: M=Mandatory, C=Conditional
User specific: R=Required, O=Optional, D=Dependent, A=Advised, N=Not used

Segments

Counter	No	Tag	St	MaxOcc	Level	Name
0580		SG16	C	9999	2	LIN-PIA-MEA-QTY-DTM-NAD-MOA-SG17-SG19
0680	23	DTM	C	5	3	Date/time/period

Standard			Implementation	
Tag	Name	St Format	St Format	Usage / Remark
C507	Date/time/period	M	M	
2005	Date/time/period qualifier	M an..3	M an..3	11 Despatch date and or time
2380	Date/time/period	C an..35	C an..35	
2379	Date/time/period format qualifier	C an..3	C an..3	204 CCYYMMDDHHMMSS

Remark:

EXAMPLE: DTM+11:20040630142059:204'

The DTM is used at the item level to identify original supplier ship date and time. This use of the DTM segment is for Freight Consolidators (pools) only.

No = Consecutive segment number
 MaxOcc = Maximum occurrence of the segment/group
 Counter = Counter of segment/group within the EDIFACT standard

St = Status
 EDIFACT: M=Mandatory, C=Conditional
 User specific: R=Required, O=Optional, D=Dependent, A=Advised, N=Not used

Segments

Counter	No	Tag	St	MaxOcc	Level	Name
0580		SG16	C	9999	2	LIN-PIA-MEA-QTY-DTM-NAD-MOA-SG17-SG19
0690	24	NAD	C	99	3	Name and address

Standard			Implementation		
Tag	Name	St Format	St Format	Usage / Remark	
3035	Party qualifier	M an..3	M an..3	SF Ship from	
C082	Party identification details	C	C		
3039	Party identification	M an..35	M an..5	Ford Motor Co. 5 character GSDB code for location. Field Length reduced to maximum allowed by Ford systems.	
1131	Code list qualifier	C an..3	N	Not used	
3055	Code list responsible agency, coded	C an..3	C an..3	92 Assigned by buyer or buyer's agent	
C058	Name and address	C	N		
3124	Name and address line	M an..35	N	Not used	
3124	Name and address line	C an..35	N	Not used	
3124	Name and address line	C an..35	N	Not used	
3124	Name and address line	C an..35	N	Not used	
3124	Name and address line	C an..35	N	Not used	
C080	Party name	C	N		
3036	Party name	M an..35	N	Not used	
3036	Party name	C an..35	N	Not used	
3036	Party name	C an..35	N	Not used	
3036	Party name	C an..35	N	Not used	
3036	Party name	C an..35	N	Not used	
3045	Party name format, coded	C an..3	N	Not used	
C059	Street	C	N		
3042	Street and number/p.o. box	M an..35	N	Not used	
3042	Street and number/p.o. box	C an..35	N	Not used	
3042	Street and number/p.o. box	C an..35	N	Not used	
3042	Street and number/p.o. box	C an..35	N	Not used	
3164	City name	C an..35	N	Not used	
3229	Country sub-entity identification	C an..9	N	Not used	
3251	Postcode identification	C an..9	N	Not used	
3207	Country, coded	C an..3	N	Not used	

No = Consecutive segment number
 MaxOcc = Maximum occurrence of the segment/group
 Counter = Counter of segment/group within the EDIFACT standard

St = Status
 EDIFACT: M=Mandatory, C=Conditional
 User specific: R=Required, O=Optional, D=Dependent, A=Advised, N=Not used

Segments

Remark:

EXAMPLE: NAD+SF+GSDB1::92'

Ship From code is used at item level by Consolidators and Pools exclusively, to indicate the original supplier ship-from code at any subsequent shipping point.

No = Consecutive segment number
MaxOcc = Maximum occurrence of the segment/group
Counter = Counter of segment/group within the EDIFACT standard

St = Status
EDIFACT: M=Mandatory, C=Conditional
User specific: R=Required, O=Optional, D=Dependent, A=Advised, N=Not used

Segments

Counter	No	Tag	St	MaxOcc	Level	Name
0580		SG16	C	9999	2	LIN-PIA-MEA-QTY-DTM-NAD-MOA-SG17-SG19
0730	25	MOA	C	5	3	Monetary amount

Standard			Implementation	
Tag	Name	St Format	St Format	Usage / Remark
C516	Monetary amount	M	M	
5025	Monetary amount type qualifier	M an..3	M an..3	146 Unit price
5004	Monetary amount	C n..35	C n..35	
6345	Currency, coded	C an..3	N	Not used
6343	Currency qualifier	C an..3	N	Not used
4405	Status, coded	C an..3	N	Not used

Remark:

EXAMPLE: MOA+146:200'

Value associated with part for customs purposes - used in export transactions only.

No = Consecutive segment number
 MaxOcc = Maximum occurrence of the segment/group
 Counter = Counter of segment/group within the EDIFACT standard

St = Status
 EDIFACT: M=Mandatory, C=Conditional
 User specific: R=Required, O=Optional, D=Dependent, A=Advised, N=Not used

Segments

Counter	No	Tag	St	MaxOcc	Level	Name
0740		SG17	C	99	3	RFF
0750	26	RFF	M	1	3	Reference

Standard			Implementation	
Tag	Name	St Format	St Format	Usage / Remark
C506	Reference	M	M	
1153	Reference qualifier	M an..3	M an..3	AAJ Delivery order number ANT Consignee's reference PK Packing list number
1154	Reference number	C an..35	M n..30	When sending 'PK' maximum field length is 8 characters. Field length reduced to maximum allowed by Ford systems.
1156	Line number	C an..6	N	Not used
4000	Reference version number	C an..35	N	Not used
1060	Revision number	C an..6	N	Not used

Remark:

EXAMPLE: RFF+PK:12345678'
RFF+AAJ:Y234523020131'

Segment with qualifier PK is mandatory for shipments to CMMS3 plants. PK number should be identical to the paper delivery document number (ASN number) of the shipment. This number should not be repeated within a one-year period.

RFF+PK is converted into CIF ASN number, so it is absolutely necessary to have one RFF+PK. The data element has to be numeric, no alpha characters allowed.

Segment is mandatory for FCSD Dealer Direct require an 'AAJ' per part shipped.

No = Consecutive segment number
MaxOcc = Maximum occurrence of the segment/group
Counter = Counter of segment/group within the EDIFACT standard

St = Status
EDIFACT: M=Mandatory, C=Conditional
User specific: R=Required, O=Optional, D=Dependent, A=Advised, N=Not used

Segments

Counter	No	Tag	St	MaxOcc	Level	Name
0830		SG19	C	100	3	LOC
0840	27	LOC	M	1	3	Place/location identification

Standard			Implementation	
Tag	Name	St Format	St Format	Usage / Remark
3227	Place/location qualifier	M an..3	M an..3	'11' used to represent the 'Dock Code' of the receiving Ford plant as sent in the DELFOR and/or DELJIT. Location received in the DELJIT will take precedence over the location received in the DELFOR. '54' used to represent the 'line feed location' with in the receiving Ford plant as sent in the DELFOR and/or DELJIT. Location received in the DELJIT will take precedence over the location received in the DELFOR. '159' used to represent the 'reserve Line Feed' for the receiving Ford plant as sent in the DELFOR and/or DELJIT. Location received in the DELJIT will take precedence over the location received in the DELFOR. For European plants this info is called 'marketplace'. 11 Place/port of discharge 54 Manufacturing department 159 Additional internal destination
C517	Location identification	C	C	
3225	Place/location identification	C an..25	C an..11	Field Size reduced to maximum allowed in Ford systems.
1131	Code list qualifier	C an..3	N	Not used
3055	Code list responsible agency, coded	C an..3	N	Not used
3224	Place/location	C an..70	N	Not used
C519	Related location one identification	C	N	
3223	Related place/location one identification	C an..25	N	Not used
1131	Code list qualifier	C an..3	N	Not used
3055	Code list responsible agency, coded	C an..3	N	Not used
3222	Related place/location one	C an..70	N	Not used
C553	Related location two identification	C	N	
3233	Related place/location two identification	C an..25	N	Not used
1131	Code list qualifier	C an..3	N	Not used

No = Consecutive segment number
 MaxOcc = Maximum occurrence of the segment/group
 Counter = Counter of segment/group within the EDIFACT standard

St = Status
 EDIFACT: M=Mandatory, C=Conditional
 User specific: R=Required, O=Optional, D=Dependent, A=Advised, N=Not used

Segments

3055	Code list responsible agency, coded	C an..3	N	Not used
3232	Related place/location two	C an..70	N	Not used
5479	Relation, coded	C an..3	N	Not used

Remark:

Example: LOC+11+1Y'

LOC+54+DOCK001'

LOC+159+ReservelineF/Marketplace'

No = Consecutive segment number
 MaxOcc = Maximum occurrence of the segment/group
 Counter = Counter of segment/group within the EDIFACT standard

St = Status
 EDIFACT: M=Mandatory, C=Conditional
 User specific: R=Required, O=Optional, D=Dependent, A=Advised, N=Not used

Segments

Counter	No	Tag	St	MaxOcc	Level	Name
1060	28	CNT	C	5	1	Control total

Standard			Implementation	
Tag	Name	St Format	St Format	Usage / Remark
C270	Control	M	M	
6069	Control qualifier	M an..3	M an..3	Both quantities must be sent. 1 Algebraic total of quantity values in all LINS 2 Number of line items in message
6066	Control value	M n..18	M n..18	
6411	Measure unit qualifier	C an..3	N	Not used

Remark:

EXAMPLE: CNT+1:30'
CNT+2:25'

No = Consecutive segment number
MaxOcc = Maximum occurrence of the segment/group
Counter = Counter of segment/group within the EDIFACT standard

St = Status
EDIFACT: M=Mandatory, C=Conditional
User specific: R=Required, O=Optional, D=Dependent, A=Advised, N=Not used

Segments

Counter	No	Tag	St	MaxOcc	Level	Name
1070	29	UNT	M	1	0	Message trailer

Standard			Implementation	
Tag	Name	St Format	St Format	Usage / Remark
0074	Number of segments in the message	M n..6	M n..6	
0062	Message reference number	M an..14	M an..14	Must match the message reference number in the UNH

Remark:
 EXAMPLE: UNT+236+1'

No = Consecutive segment number
 MaxOcc = Maximum occurrence of the segment/group
 Counter = Counter of segment/group within the EDIFACT standard

St = Status
 EDIFACT: M=Mandatory, C=Conditional
 User specific: R=Required, O=Optional, D=Dependent, A=Advised, N=Not used

Segments

Counter	No	Tag	St	MaxOcc	Level	Name
0000	32	UNZ	M	1	0	Interchange trailer

Standard			Implementation	
Tag	Name	St Format	St Format	Usage / Remark
0036	Interchange control count	M n..6	M n..6	
0020	Interchange control reference	M an..14	M an..14	

Remark:

UNZ+1+00000987654321'

No = Consecutive segment number
 MaxOcc = Maximum occurrence of the segment/group
 Counter = Counter of segment/group within the EDIFACT standard

St = Status
 EDIFACT: M=Mandatory, C=Conditional
 User specific: R=Required, O=Optional, D=Dependent, A=Advised, N=Not used

Segments

UNA:+.? '
 UNB+UNOC:3+ABCDE+0134A+060307:1000+00000987654321'
 UNH+1+DESADV:D:98B:UN'
 BGM+351+12345678910+9'
 DTM+11:20060307160159:204'
 DTM+137:20060307160359:204'
 MEA+WT+G+KG:3700'
 MEA+WT+N+KG:745.095'
 MOA+23:2300:EUR::75'
 RFF+BM:12345678910'
 NAD+ST+0134A::92'
 NAD+SF+ABCDF::92'
 NAD+SU+ABCDE::92'
 TOD++CC+::116:FOB'
 LOC+5+ABCDF'
 TDT+12++O+13:VESSELNAME+GSDBA+++CONT'
 EQD+CN+AINER'
 SEL+123456789A'
 CPS+1++4'
 PAC+20++KLT4329::92'
 QTY+117:200'
 QTY+52:25'
 PCI+15'
 GIR+3+S12345678:ML+S12345686:ML'
 CPS+1++4'
 PAC+20++CHEPBASE1::92'
 QTY+117:200'
 QTY+52:25'
 PCI+15'
 GIR+3+S12345678:ML+S12345686:ML'
 LIN+1++3M81 1012 AA:IN::92'
 PIA+1+5001011099:PO'
 MEA+PD+N+KG:10'
 QTY+12:200:EA'
 QTY+3:1000:EA'
 RFF+PK:12345678'
 LOC+11+1H'
 LOC+54+dockM15'
 CNT+1:200'
 CNT+2:1'
 UNT+33+1'
 UNZ+1+00000987654321'

No = Consecutive segment number
 MaxOcc = Maximum occurrence of the segment/group
 Counter = Counter of segment/group within the EDIFACT
 standard

St = Status
 EDIFACT: M=Mandatory, C=Conditional
 User specific: R=Required, O=Optional, D=Dependent,
 A=Advised, N=Not used

Segments

No = Consecutive segment number
MaxOcc = Maximum occurrence of the segment/group
Counter = Counter of segment/group within the EDIFACT
standard

St = Status
EDIFACT: M=Mandatory, C=Conditional
User specific: R=Required, O=Optional, D=Dependent,
A=Advised, N=Not used